



Tulsa Community Foundation

Philanthropy for Public Places

public-private cooperation for the public good

Tulsa



- Settled in 1836 by two tribes
- Sits on the banks of the Arkansas River
- Incorporated in 1898
- First oil well established in 1901 (Glenn Pool)
- Population surges: from 1,000 in 1900 to 140,000 by 1930
- “Oil Capital of the World”
- Black Wall Street and 1921 Race Massacre
- Route 66

“They said we couldn’t do it,
but we did!”



Route 66 – Cyrus Avery



Stud Horse Note



Museums



Performing Arts Center



And then....

- 1980 Oil bust
 - Price per barrel tanked (\$35 to \$10)
 - Housing market crashed
 - Jobs vanished (102K energy jobs in '82 to 43K in '88)
 - Banks closed
 - Bankruptcies soared (123 in '81 to 1,568 in '86)
 - Major corporations consolidated, merged, taken over or moved away (Conoco, Texaco, Cities, Phillips)
- Tulsa Spirit was...

...shaken, but not broken

- Survived 80s
- Rebuilt in 90s
- 1998 – founding of Tulsa Community Foundation
 - Consolidated many independent philanthropic efforts into one
 - Focused on creating public-private partnerships
 - Quickly became the largest community foundation in the United States

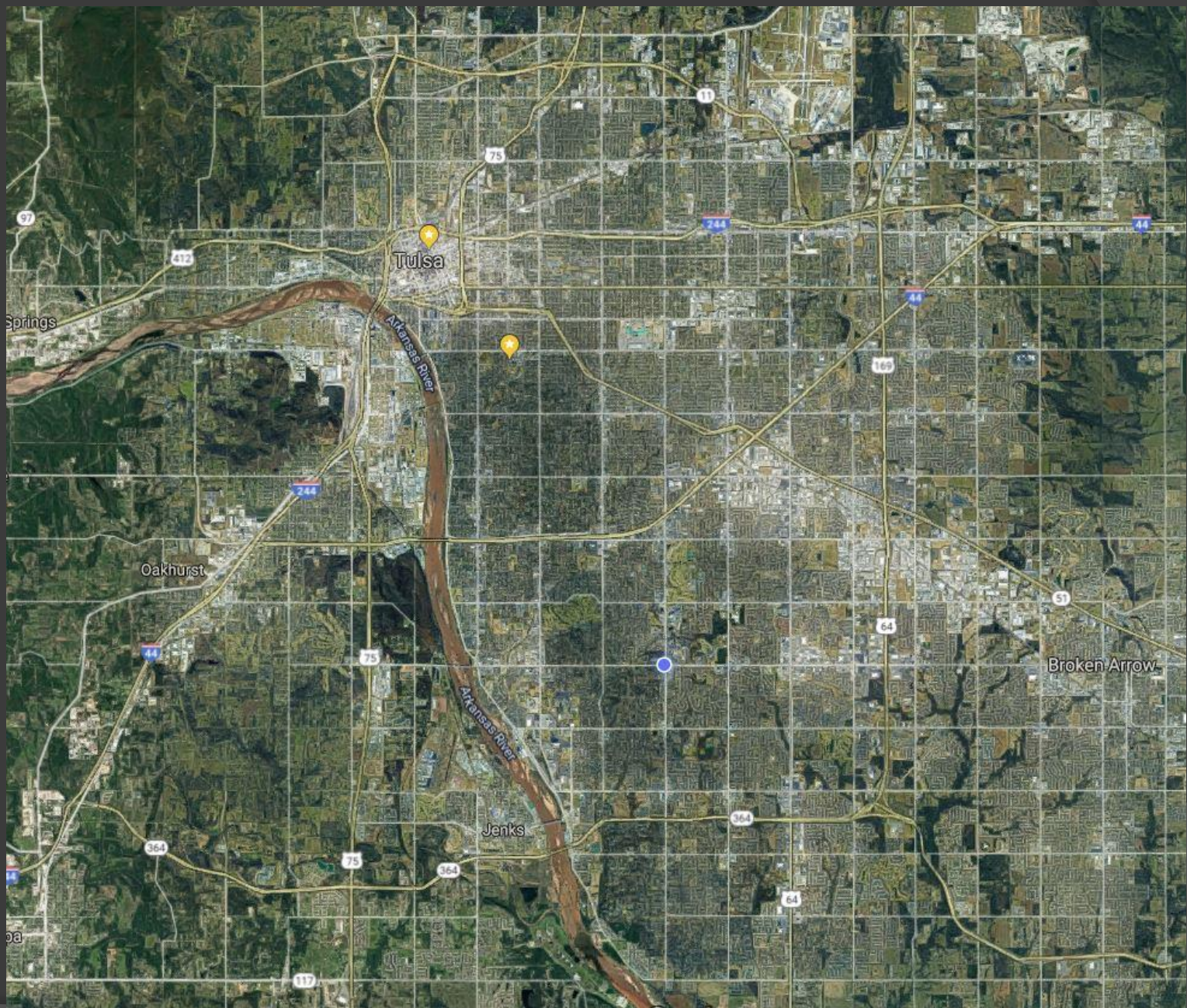
Public-private partnerships under TCF

- Zoo privatization
- KPMG efficiency study
- Educare
- Tulsa Beautification Foundation
- TPD Foundation
- PlaniTulsa Comprehensive Plan
- BOk Center and ONEOK Field
- Tulsa Parks Master Plan
- Riverparks and Guthrie Green

A Gathering Place for Tulsa

An aerial architectural rendering of a proposed park development along a river. The scene features a large, winding river on the left, with a bridge crossing it. A stone-lined riverbank curves along the right side of the river. The park area is lush with green grass, numerous trees in various shades of green and autumnal colors, and winding pedestrian paths. Several small, modern buildings are scattered throughout the park. The overall atmosphere is serene and inviting, suggesting a high-quality public space for the community.

GEORGE KAISER FAMILY FOUNDATION +
MICHAEL VAN VALKENBURGH ASSOCIATES



River Parks



River Parks



River Parks...Now



Guthrie Green



Guthrie Green Project Site - Before



Guthrie Green

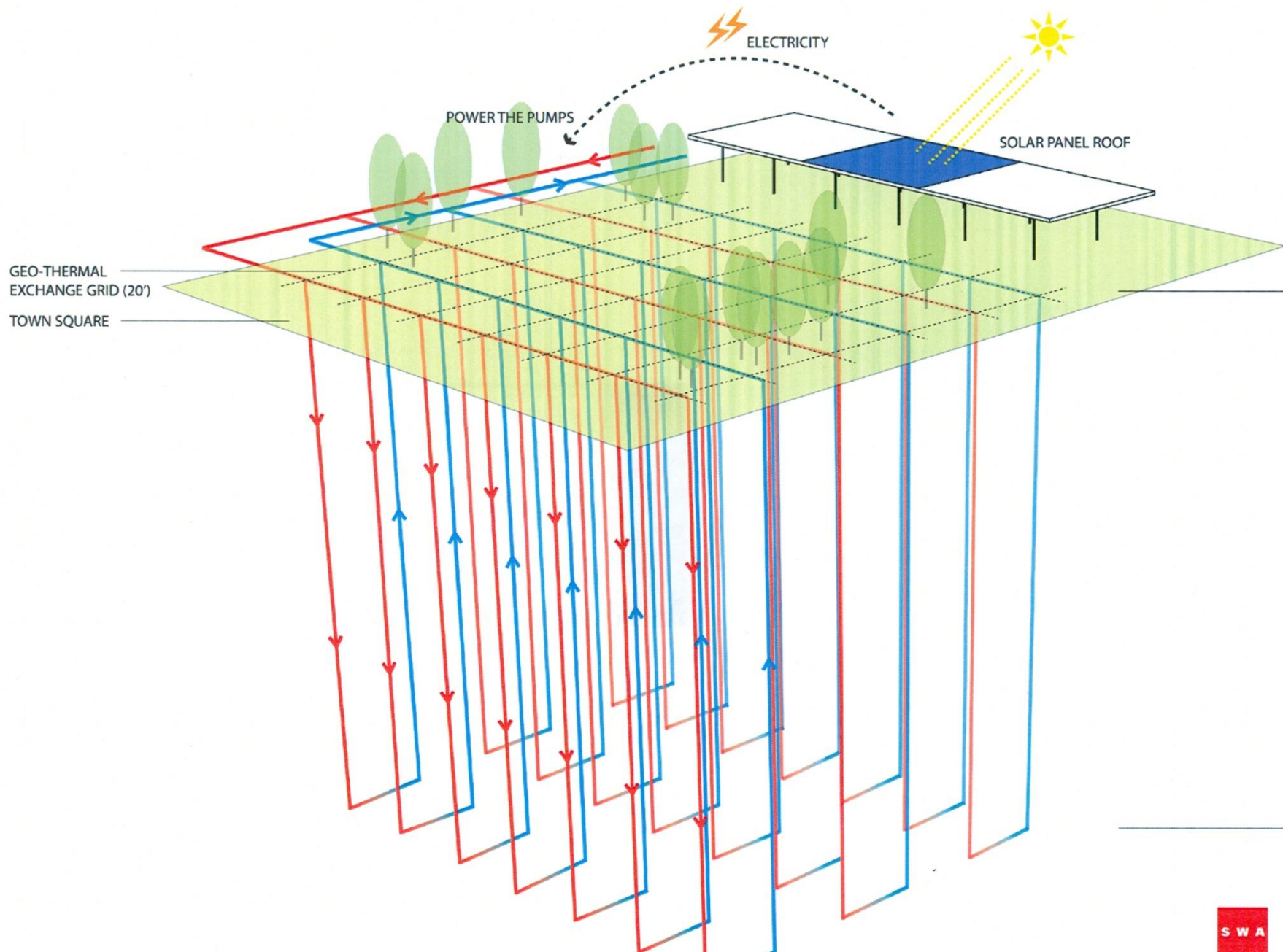


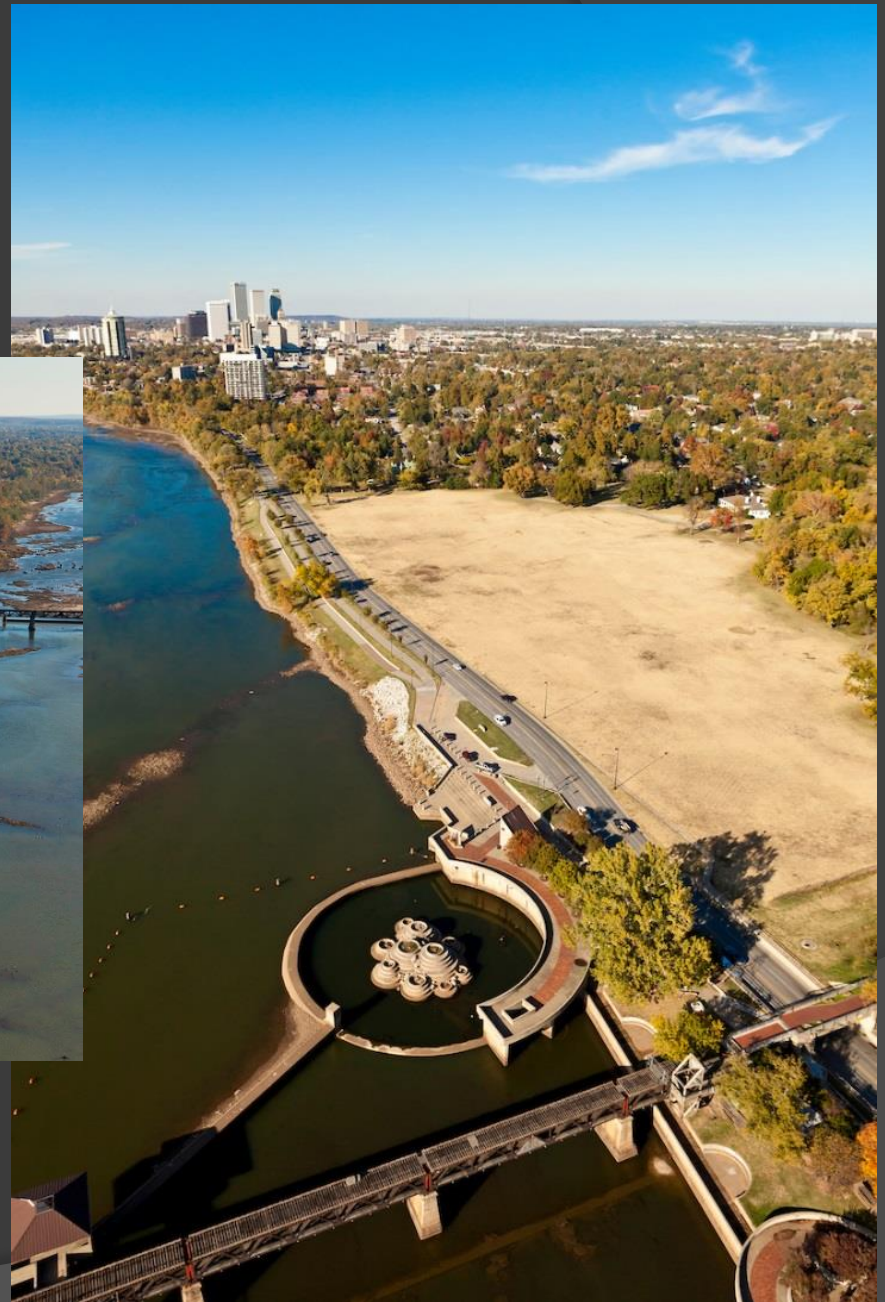
Guthrie Green



Guthrie Green





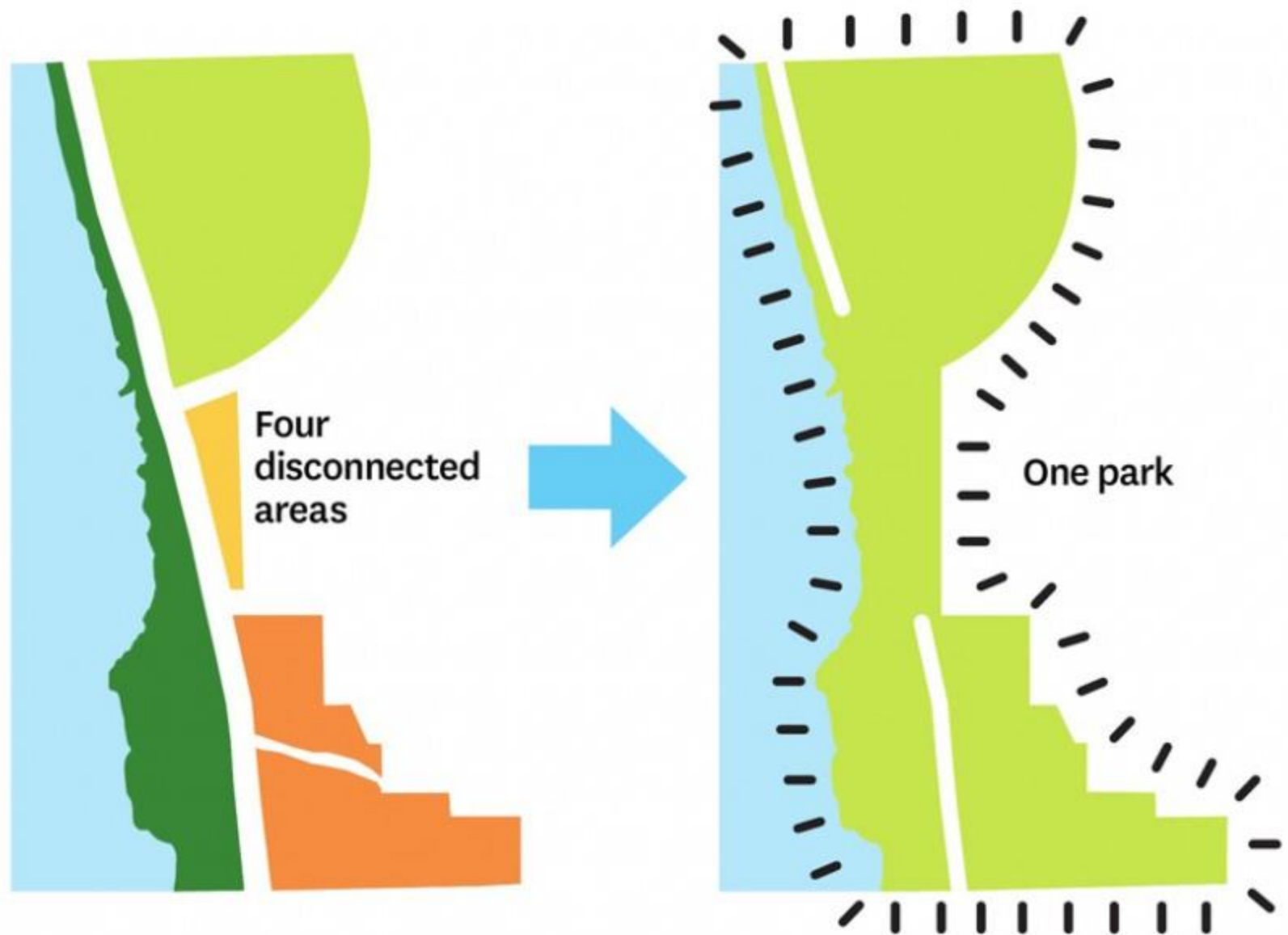




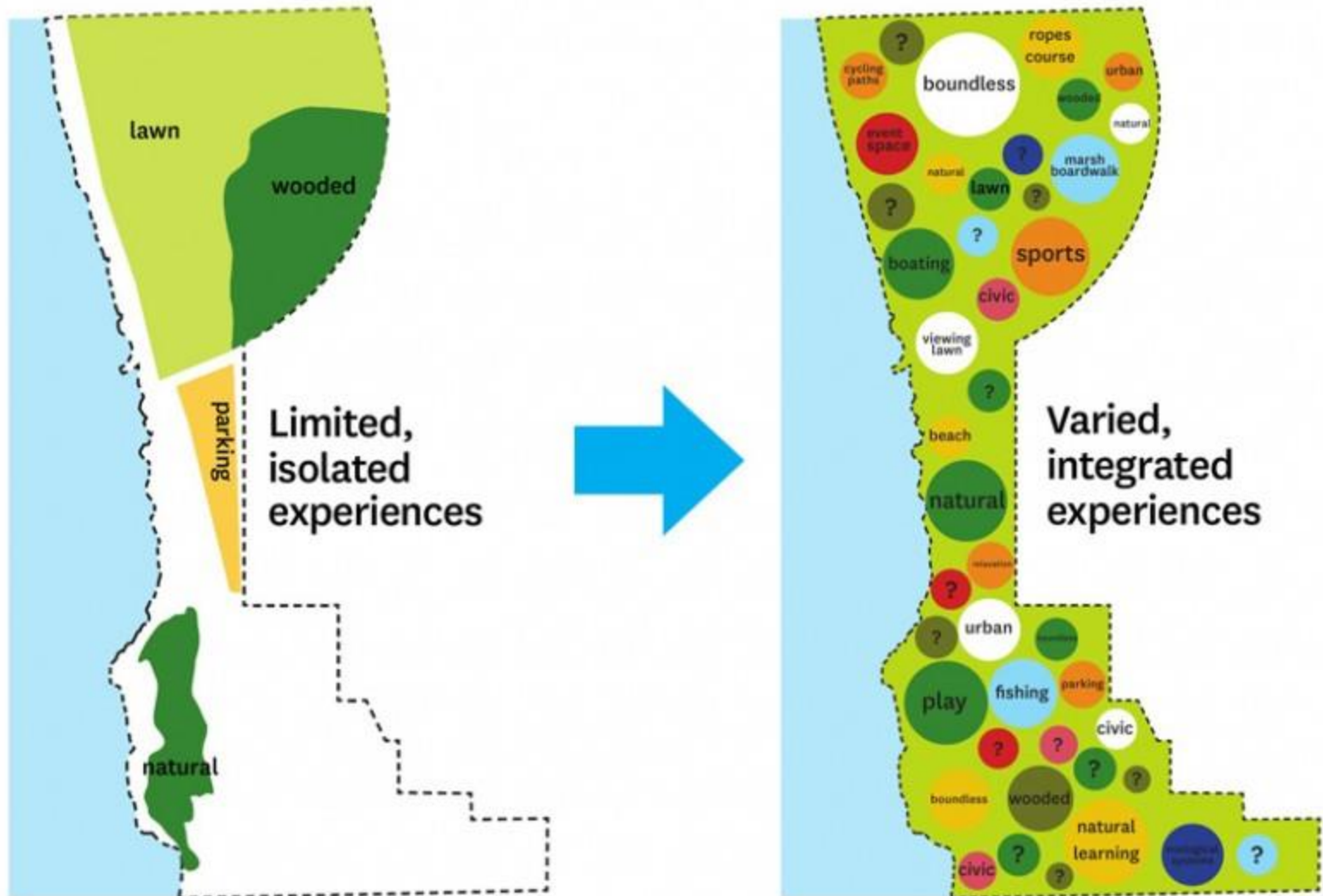
Public Meetings - May 2012



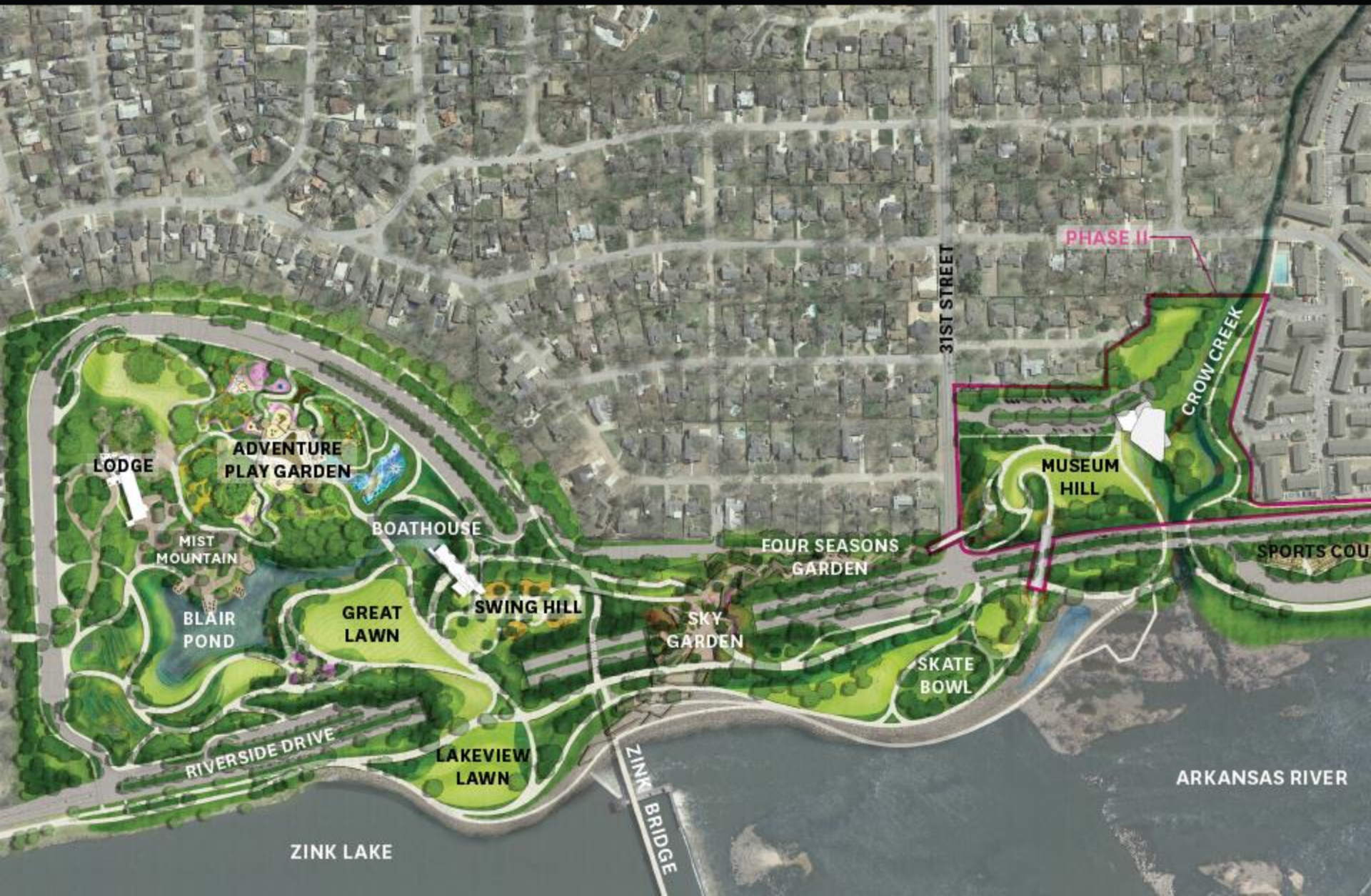
Landscape Goals: **Unify the Site**



Landscape Goals: **Provide a Variety of Experiences**



Final Schematic Design



































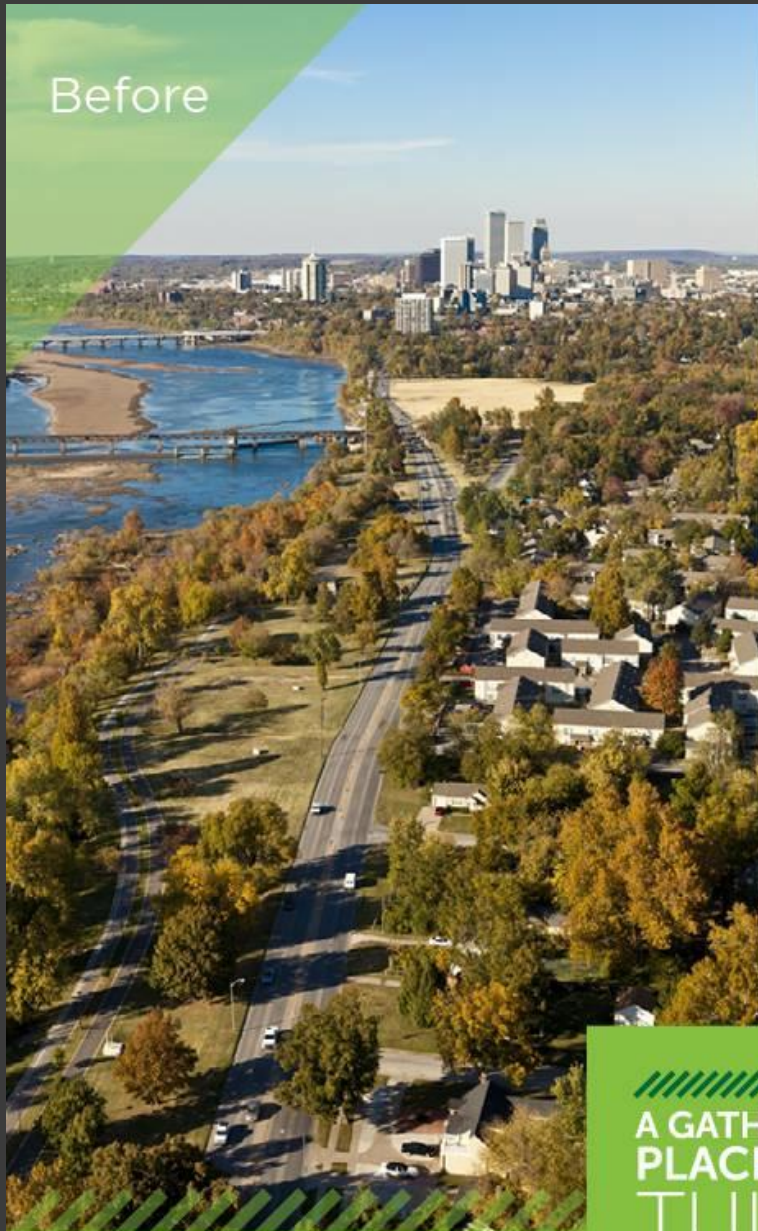




Stats

- \$465MM
 - \$50MM land
 - \$225MM construction
 - \$25MM architectural, engineering, consultants, etc.
 - \$100MM endowment
 - \$65MM public infrastructure and investments
- 66 acres in phase 1
- 600 trees preserved and 5,789 planted
- 1.2MM shrubs, plantings, and plugs
- 16 acres of wildflowers and native grass
- 8 miles of pathways
- 2.8MM visitors in year one

Before



A GATH
PLACE
TULSA



Tulsa



- 45th largest city in the U.S.
 - 403,000 people in city; 1MM in MSA
- 2012 – “America’s Most Generous City®”
- 2018 – “Best City for Philanthropy”
 - Readers, nonprofit watchers selected Tulsa as “the place that is a model for charitable giving.”



(918) 494-8823

www.TulsaCF.org

Phil Lakin, Jr., CEO